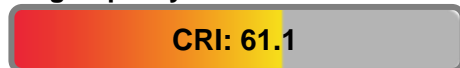


Light efficiency:



Light quality:



Color temperature:



Output: 11711 lm

Peak: 3258 cd

Power: 389 W

PF: 1.0



Product name:

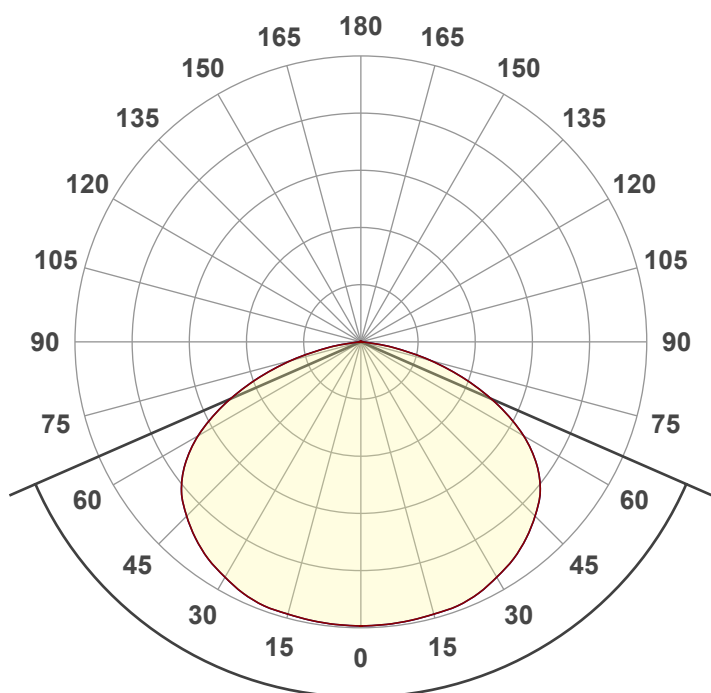
Vintage Bar

Item number:

Full on,Amber

Date and time:

6/3/2026 10:31:18 AM



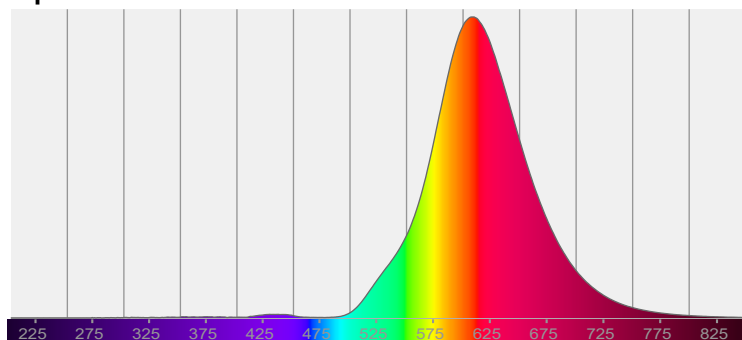
Beam angle

132.8°

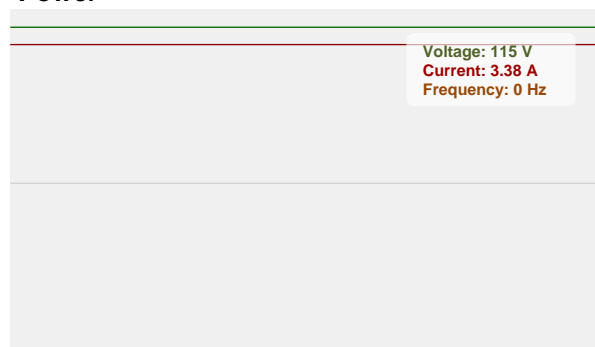


CIE 1931
x: 0.566
y: 0.424

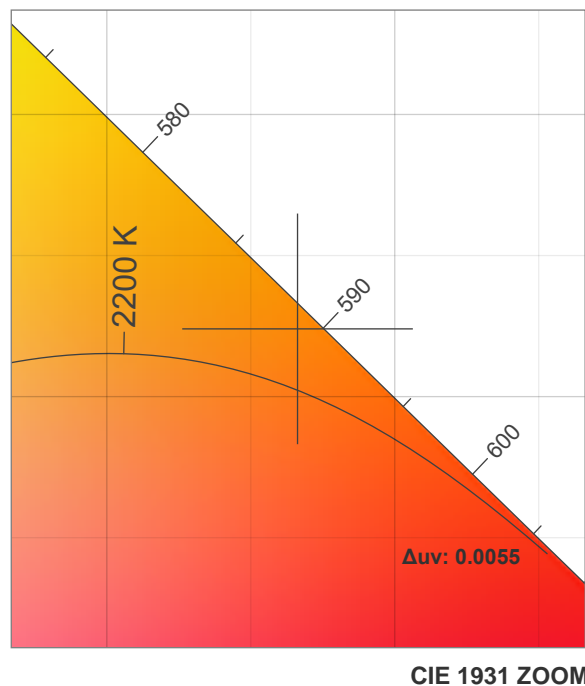
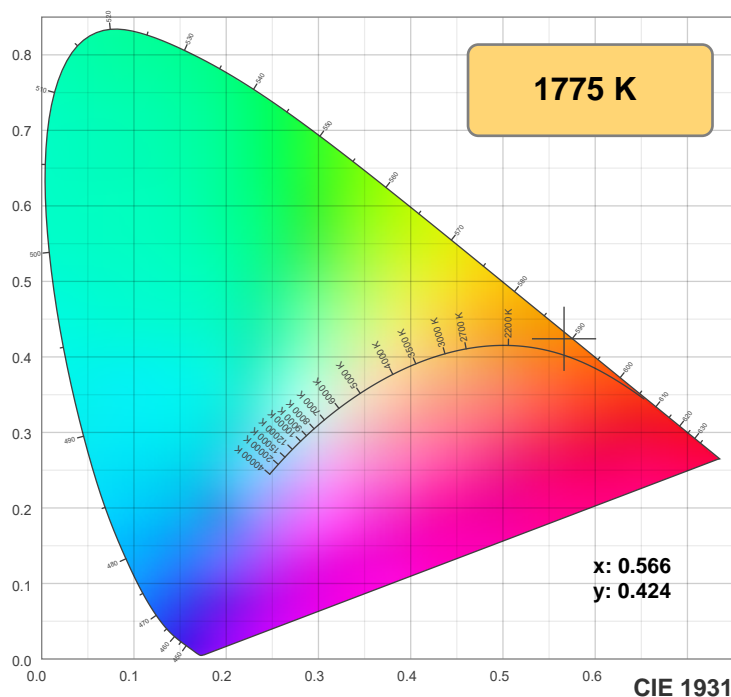
Spectra



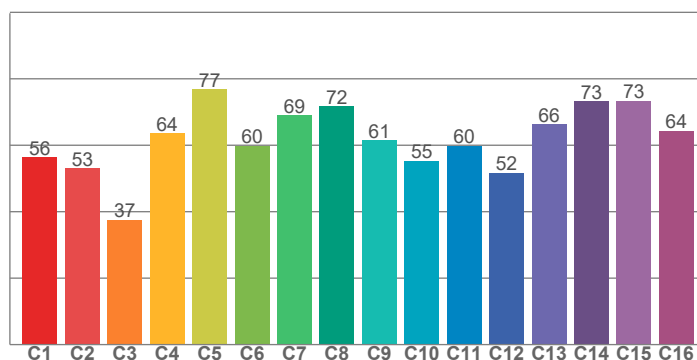
Power



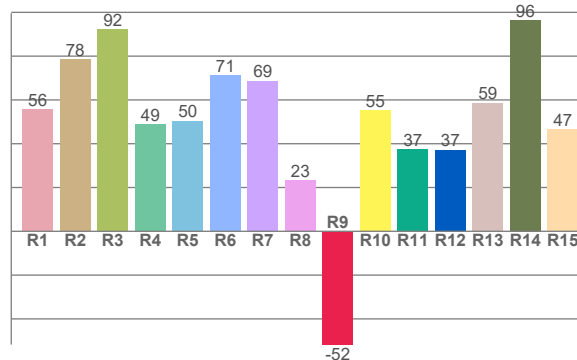
Color details



TM-30: 61.6



CRI: 61.1 (R1-R8)



CRI R values, only R1-R8 are used to calculate final CRI value

R1	R2	R3	R4	R5	R6	R7	R8	R9	R10	R11	R12	R13	R14	R15
55.7	78.4	92.2	48.8	50.4	71.3	68.8	23.3	-51.7	55.4	37.4	37.2	58.7	96.5	46.7

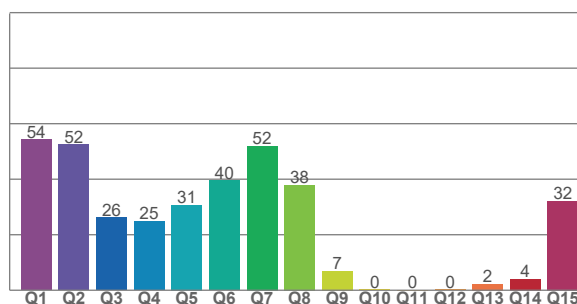
TM30 C values, 16 binned values out of total of 99 C values

C1	C2	C3	C4	C5	C6	C7	C8	C9	C10	C11	C12	C13	C14	C15	C16
56.3	53.0	37.5	63.6	76.8	59.8	69.0	71.7	61.5	55.3	59.9	51.7	66.3	73.1	73.3	64.3

CQS Q values

Q1	Q2	Q3	Q4	Q5	Q6	Q7	Q8	Q9	Q10	Q11	Q12	Q13	Q14	Q15
54.3	52.4	26.2	24.8	30.7	39.5	51.9	38.0	7.0	0.2	0.1	0.3	2.3	4.0	32.2

CQS: 12.0



Color parameters

Color temperature	Color rendering index	Red component	Color fidelity	Color gamut	Color quality scale	Color coordinate cie 1931	Color coordinate cie 1931	Color coordinate	Color coordinate	Color deviation from black body
CCT	CRI	CRI R9	TM30 Rf	TM30 Rg	CQS	x	y	u	v	Δuv
1775 K	61.1	-51.7	61.6	56.7	12.0	0.566	0.424	0.326	0.366	0.0055

TM-30 details

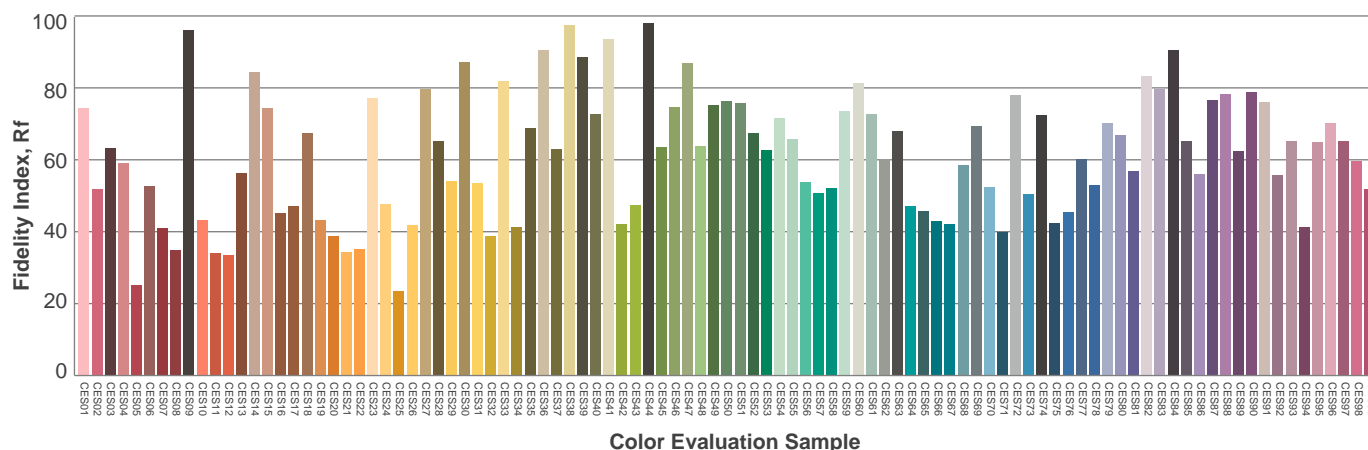
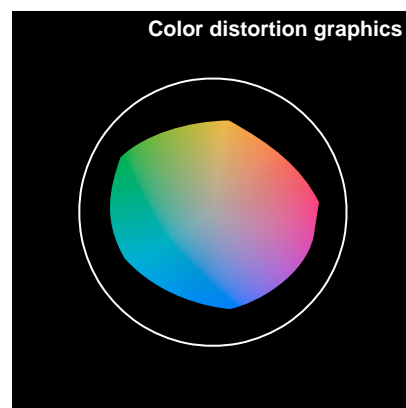
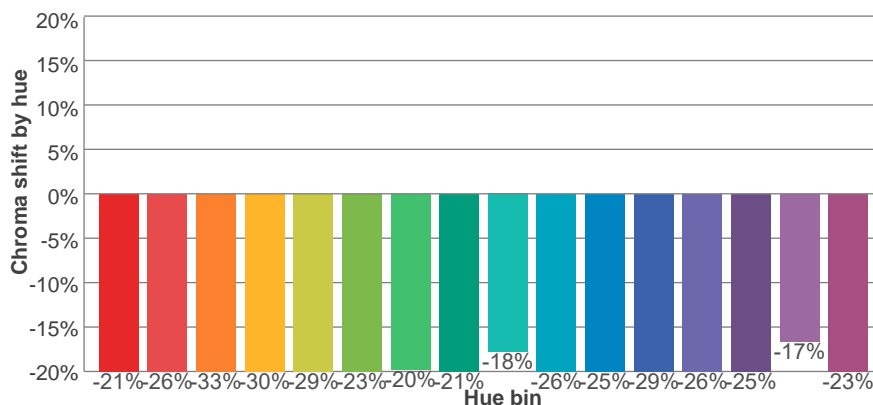
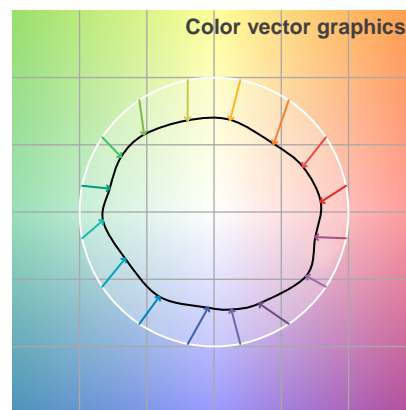
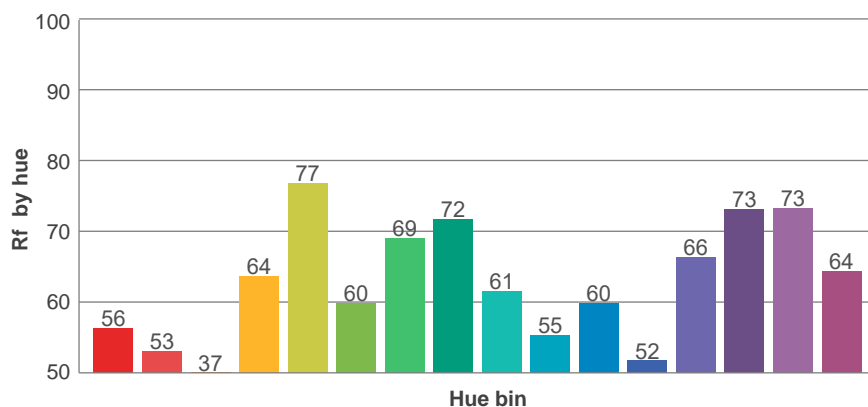
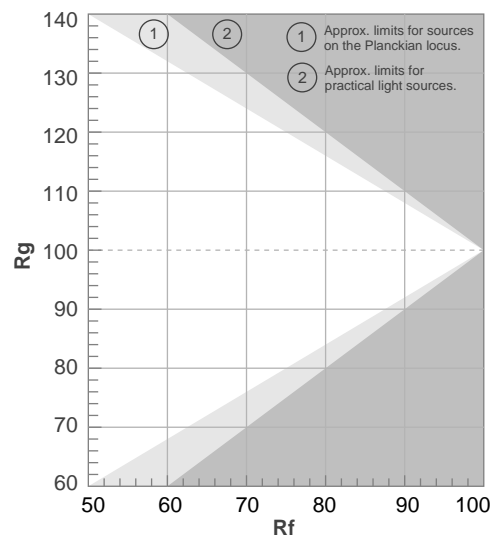
Rf 61.6

Fidelity index Rf

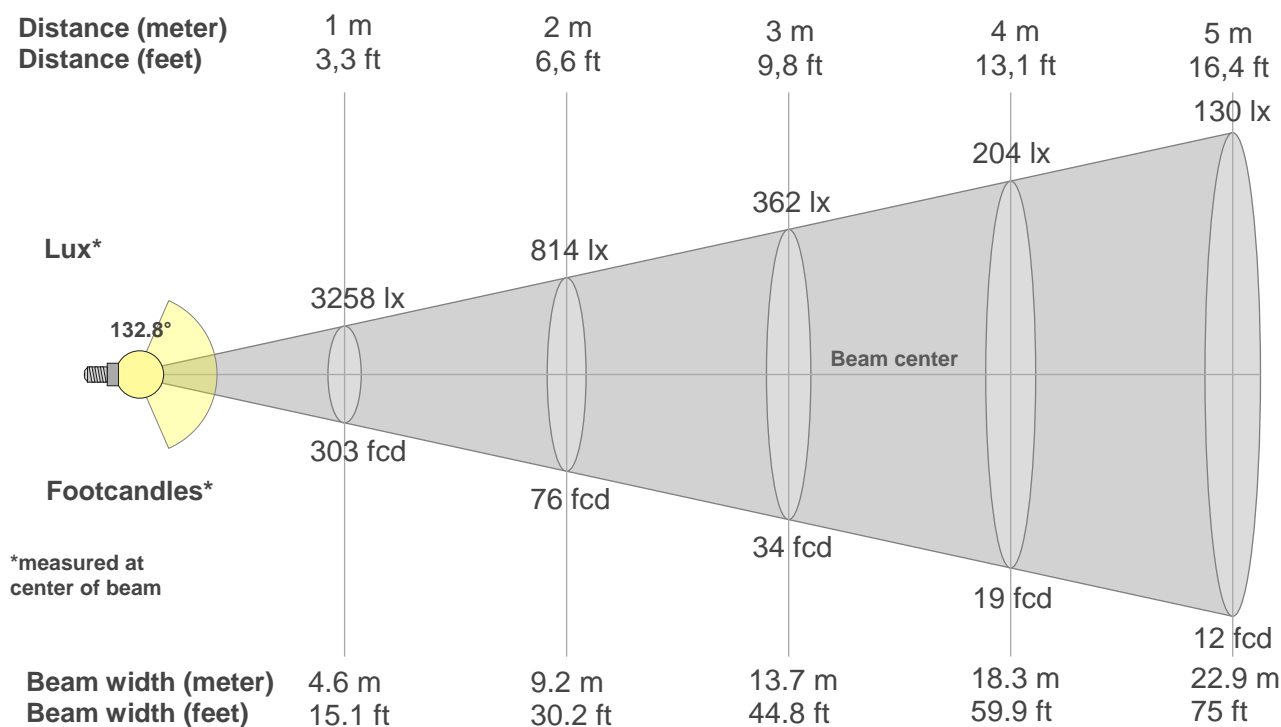
Rg 56.7

Gamut index Rg

Hue Bin	R _f	Shifts (%)	
		Chroma	Hue
1	56	-21%	-8%
2	53	-26%	-9%
3	37	-33%	-9%
4	64	-30%	2%
5	77	-29%	6%
6	60	-23%	11%
7	69	-20%	4%
8	72	-21%	-2%
9	61	-18%	-10%
10	55	-26%	-8%
11	60	-25%	1%
12	52	-29%	10%
13	66	-26%	-2%
14	73	-25%	-10%
15	73	-17%	-1%
16	64	-23%	-4%



Beam details



Beam intensities from 1-20m

1m	2m	3m	4m	5m	6m	7m	8m	9m	10m	11m	12m	13m	14m	15m	16m	17m	18m	19m	20m
3.3ft	6.6ft	9.8ft	13.1ft	16.4ft	19.7ft	23ft	26.2ft	29.5ft	32.8ft	36.1ft	39.4ft	42.7ft	45.9ft	49.2ft	52.5ft	55.8ft	59.1ft	62.3ft	65.6ft
3258lx	814lx	362lx	204lx	130lx	90lx	66lx	51lx	40lx	33lx	27lx	23lx	19lx	17lx	14lx	13lx	11lx	10lx	9lx	8lx
302.7fcd	75.7fcd	33.6fcd	18.9fcd	12.1fcd	8.4fcd	6.2fcd	4.7fcd	3.7fcd	3fcd	2.5fcd	2.1fcd	1.8fcd	1.5fcd	1.3fcd	1.2fcd	1fcd	0.9fcd	0.8fcd	0.8fcd

Intensities in 0° c-plane

0°	5°	10°	15°	20°	25°	30°	35°	40°	45°	50°	55°	60°	65°	70°	75°	80°	85°	90°	95°
3258	3253	3244	3231	3224	3184	3115	3044	2945	2824	2683	2462	2154	1754	1300	833	383	58	3	1
100%	100%	100%	99%	99%	98%	96%	93%	90%	87%	82%	76%	66%	54%	40%	26%	12%	2%	0%	0%

Intensities in 90° c-plane

0°	5°	10°	15°	20°	25°	30°	35°	40°	45°	50°	55°	60°	65°	70°	75°	80°	85°	90°	95°
3258	3253	3244	3231	3224	3184	3115	3044	2945	2824	2683	2462	2154	1754	1300	833	383	58	3	1
100%	100%	100%	99%	99%	98%	96%	93%	90%	87%	82%	76%	66%	54%	40%	26%	12%	2%	0%	0%

Intensities in 180° c-plane

0°	5°	10°	15°	20°	25°	30°	35°	40°	45°	50°	55°	60°	65°	70°	75°	80°	85°	90°	95°
3258	3253	3244	3231	3224	3184	3115	3044	2945	2824	2683	2462	2154	1754	1300	833	383	58	3	1
100%	100%	100%	99%	99%	98%	96%	93%	90%	87%	82%	76%	66%	54%	40%	26%	12%	2%	0%	0%

Intensities in 270° c-plane

0°	5°	10°	15°	20°	25°	30°	35°	40°	45°	50°	55°	60°	65°	70°	75°	80°	85°	90°	95°
3258	3253	3244	3231	3224	3184	3115	3044	2945	2824	2683	2462	2154	1754	1300	833	383	58	3	1
100%	100%	100%	99%	99%	98%	96%	93%	90%	87%	82%	76%	66%	54%	40%	26%	12%	2%	0%	0%

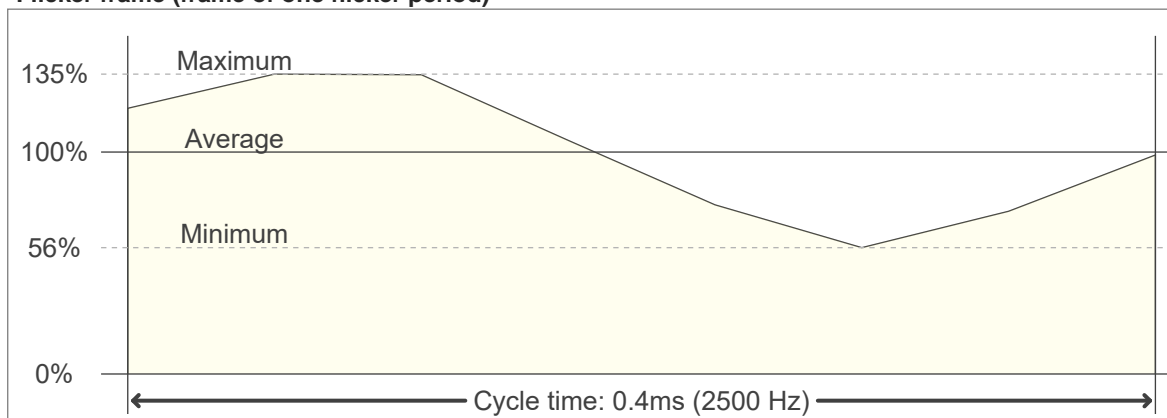
Beam angle 50%	Field angle 10%	Cutoff angle 2,5%	Intensity ratio in 120° cone	Intensity ratio in 90° cone
132.8°	161.7°	169.3°	76.6%	48.4%

Flicker

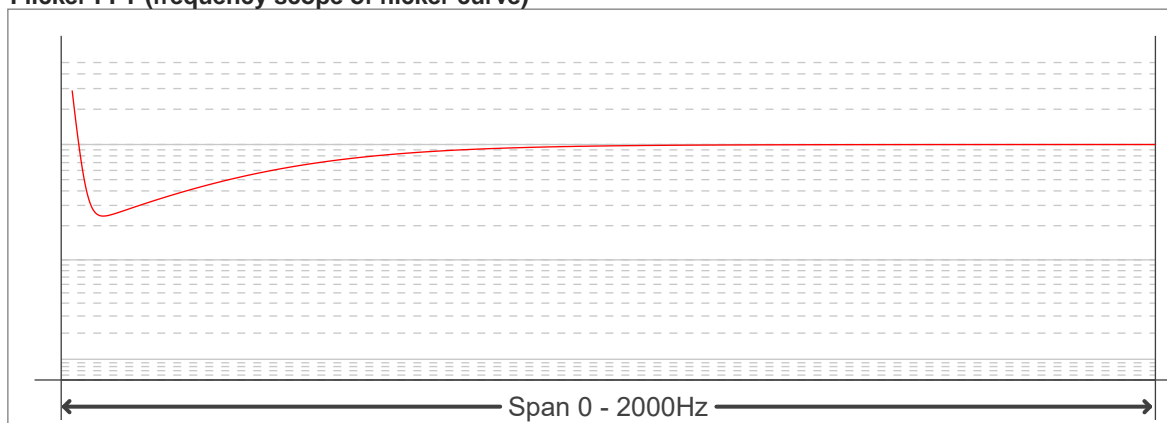
Flicker curve (complete sampled flicker signal)



Flicker frame (frame of one flicker period)



Flicker FFT (frequency scope of flicker curve)



Flicker results:

Flicker frequency:		2500 Hz	
Flicker index:	0.12	JA8/10 40Hz	0.83 %
Flicker percentage:	87.53 %	JA8/10 90Hz	1.83 %
SVM: (Visual flicker)	0	JA8/10 200Hz	4.02 %
PstLM	0	JA8/10 400Hz	8.05 %
Mp	0.15	JA8/10 1000Hz	19.87 %

Flicker conditions:

Sample rate:	20000 samples/second
--------------	----------------------